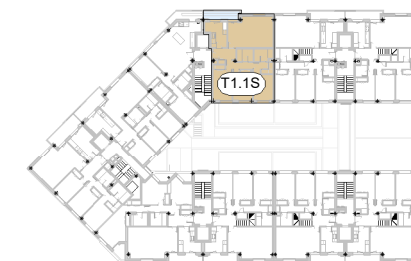
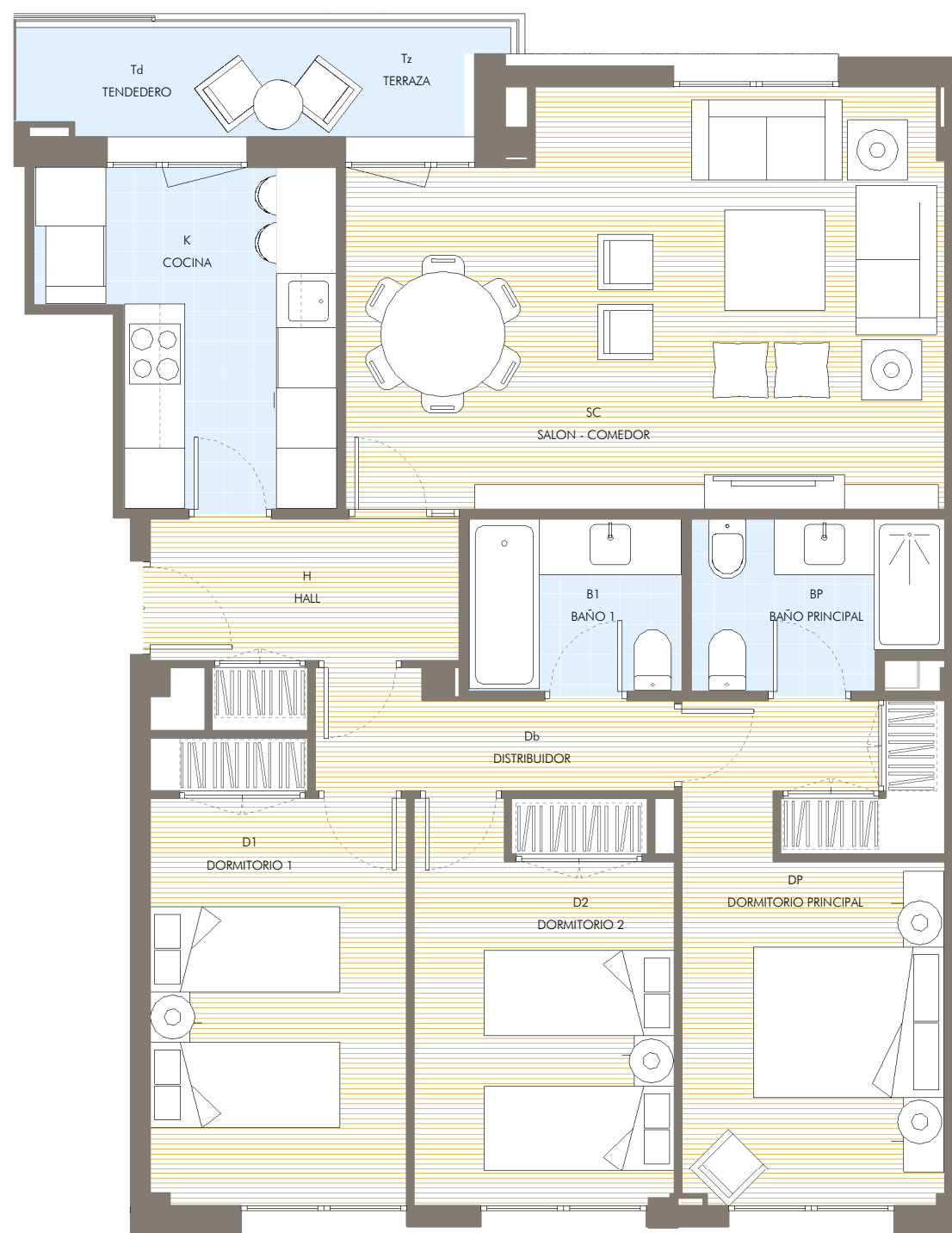


P.PRIMERA



P.SEGUNDA



VIVIENDA TIPO T1.1 S

CANTIDAD

3D
3

SC	SALON - COMEDOR	24.25 m ²
K	COCINA	8.10 m ²
DP	DORMITORIO PRINCIPAL	13.00 m ²
Db	DISTRIBUIDOR	3.55 m ²
H	HALL	4.95 m ²
BP	BAÑO PRINCIPAL	3.95 m ²
D1	DORMITORIO 1	11.35 m ²
D2	DORMITORIO 2	10.55 m ²
B1	BAÑO 1	3.75 m ²

SUP. UTIL INTERIOR	83.45 m²
---------------------------	----------------------------

Td	TENEDERO	2.75 m ²
Tz	TERRAZA	3.65 m ²

SUP. UTIL DE LA VIVIENDA	89.85 m²
---------------------------------	----------------------------

SUP. CONSTRUIDA PROPIA	94.25m²
-------------------------------	---------------------------

SUP. CONST. +P.P COMUNES	125.17m²
---------------------------------	----------------------------