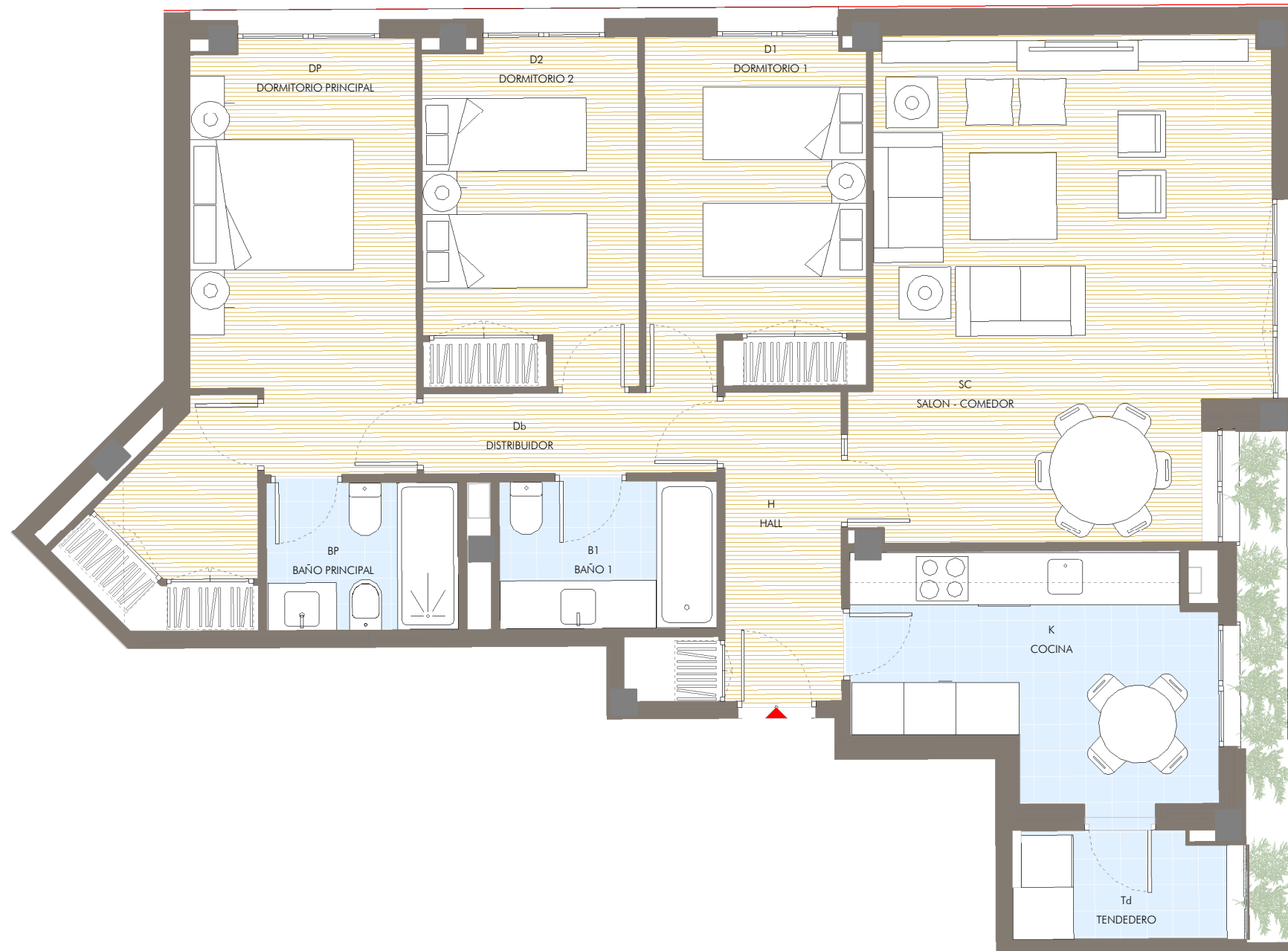


P.BAJA



VIVIENDA TIPO B3

CANTIDAD

3D
1

SC	SALON - COMEDOR	25.70 m ²
K	COCINA	9.75 m ²
H	HALL	6.35 m ²
Db	DISTRIBUIDOR	3.15 m ²
BP	BAÑO PRINCIPAL	3.75 m ²
DP	DORMITORIO PRINCIPAL	16.85 m ²
D1	DORMITORIO 1	10.45 m ²
D2	DORMITORIO 2	10.00 m ²
B1	BAÑO 1	3.75 m ²

SUP. UTIL INTERIOR	89.75m ²
--------------------	---------------------

Td TENEDERO	3.10 m ²
-------------	---------------------

SUP. UTIL DE LA VIVIENDA	92.85m ²
--------------------------	---------------------

SUP. CONSTRUIDA PROPIA	107.45m ²
------------------------	----------------------

SUP. CONST. + P.P. COMUNES	134.57m ²
----------------------------	----------------------